



TUFFLOOR®

FOR HIGH TEMPERATURE
FLOORING APPLICATIONS



Global **Refractory** Solutions



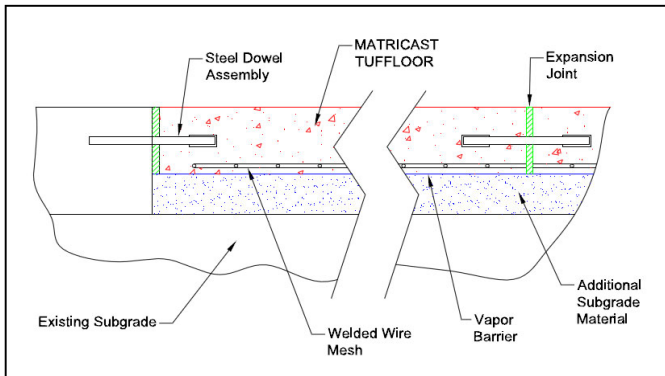
SOLUTION TO FLOORING PROBLEMS

TUFFLOOR®

TUFFLOOR® is designed for areas exposed to extreme thermal cycling and intermittent exposure to liquid metal spills, dross, and slog. It is a versatile product that can be installed as a complete floor, over existing (or new) concrete, or as precast tiles. TUFFLOOR has over 20 years of proven performance in a ferrous and non-ferrous foundries, primary metal production (aluminum, steel, iron, zinc, copper, ferro-alloys), rolling mills and many other hot flooring applications.

Benefits

- Fast project turn around time due to early strength development
- Exceeds cold crushing strength of conventional concrete
- Reduced maintenance time and expense
- Safer working surfaces
- Minimized wear on mobile equipment
- Custom colors available
- Excellent freeze-thaw properties



Engineering design for high-load application



Variety of colors available



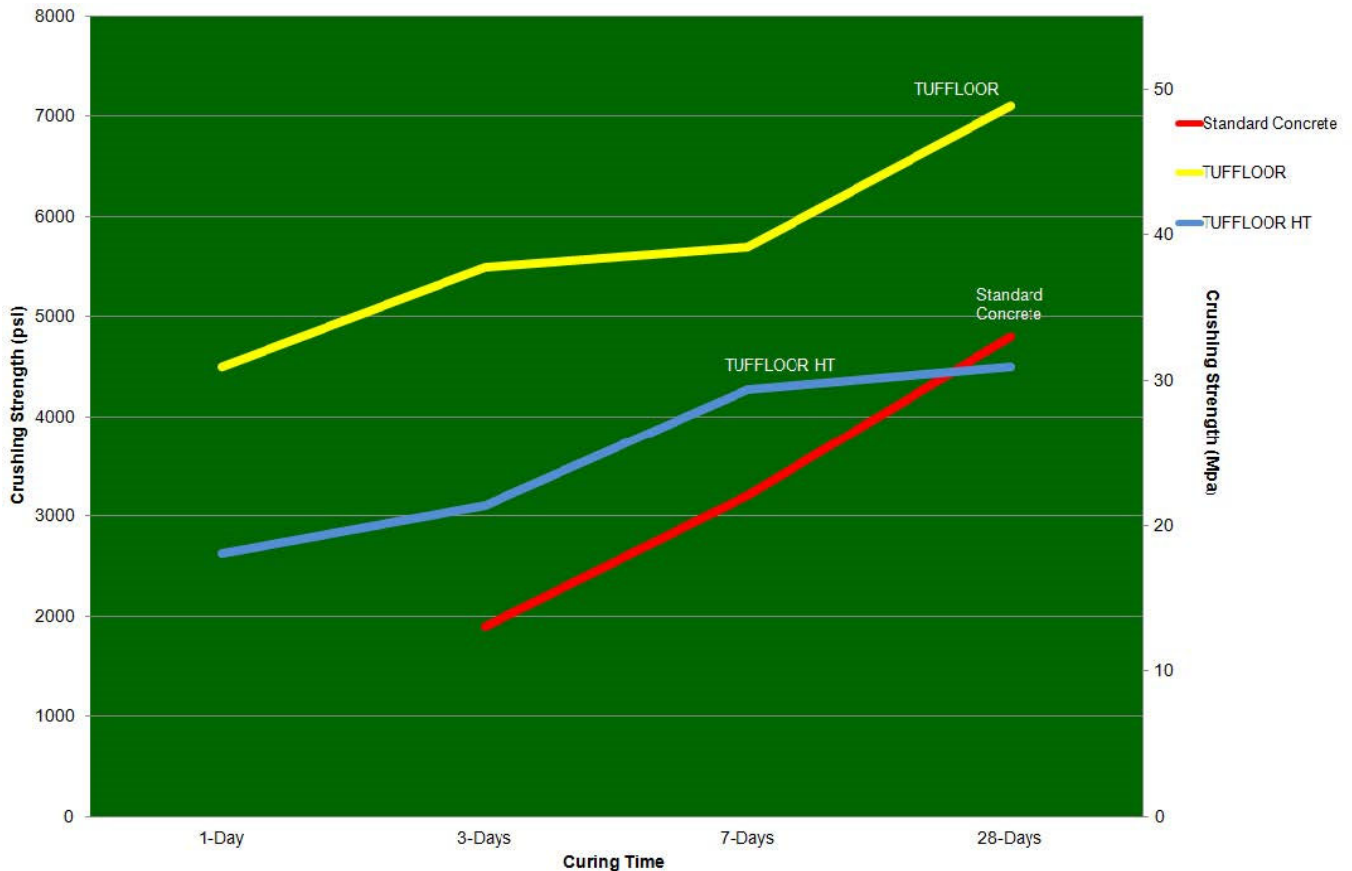
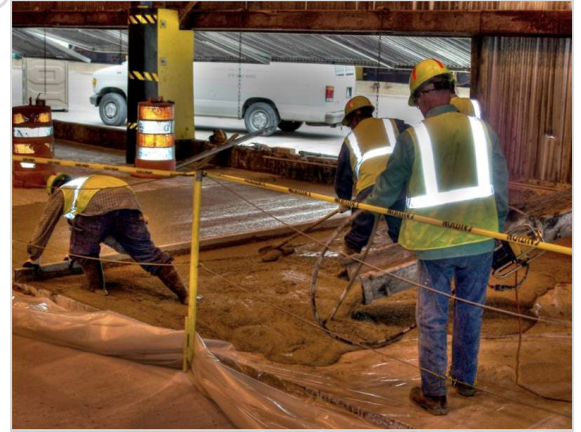
TUFFLOOR® Standard Concrete
Thermal Cycling to 760°C (1400°F)





STRONG AND VERSATILE TUFFLOOR® PRODUCT LINE

- **TUFFLOOR®** is the strongest and most versatile product in the family line. It has excellent thermal shock resistance and is often used to replace concrete in both original flooring construction and maintenance applications.
- **TUFFLOOR® HT** is capable of withstanding continuous temperatures to 1370°C (2500°F) and intermittent temperatures to 1427°C (2600°F).
- **TUFFLOOR® HT ACX** offers all the benefits of TUFFLOOR HT along with a non-wetting additive. It can withstand continuous temperatures to 1315°C (2400°F) and intermittent temperatures to 1370°C (2500°F).





APPLICATION GUIDE

√ = Recommended
O = Optional

	TUFFLOOR®	TUFFLOOR®	PRECAST TILES
FOUNDRY			
Channel and Coreless Furnace Decks	√	O	O
Furnace Pits	√	O	O
Mold Shake-Out Area Floors	√	O	O
Ladle Pouring Station Floors	√	O	O
Cupola Pits	√	O	O
Aisle Ways	√	O	O
Pig Cooling Bays	√	O	O
Pouring Line Floors	√	O	O
All Metal Splash Area Floors	√	O	O
Slagging Station Floors	√	O	O
OTHER			
Fire Training Facilities	O	√	O
Steel Stirring Paddles		√	
COPPER			
Decks and Floors	√	O	O
Pre-heating Stations	√	O	O
Spill Containment Pads Around Furnaces	√	O	O
Spill Containment Pads at Casting Stations	√	O	O
Splash and Heat Panels	√	O	O
Mold Preheating and Cooling Areas	√	√	√

	TF	HT	HT ACX
Pot line Floors	√		
Furnace Area Floors	√	O	O
Casthouse Floors	√	O	O
Die Cast Shop Floors	√	O	O
Hot Slab and Coil Storage Areas	O	√	O
Dross Cooling and Transfer Area Floors	O	√	O
Ladle Pads and Pouring Station Floors	√	O	O

	TF	HT	TILES
STEEL			
Coke Oven			
Coke Oven Wharfs	√	√	√
Quench Stations	√	√	√
Oven Tops	√	√	√
Blast Furnace			
Casthouse Floors	√	√	√
Tuyere Platform Floors	√	√	√
Track Areas at Hot Metal Pouring Stations	√	√	
BOF			
Hot Metal Pouring Station Floors	√	√	√
Slag Skimming Station Floors	√	√	√
Furnace Deck	√	√	√
Ladle Teaming Area Floors	√	√	√
Arc Furnace Shops			
Ladle Preheat Stations Floors	√	√	√
Furnace Decks and Pits	√	√	
Other Steel			
Desulfurization Station Floors and Decks	√	√	√
Sinter Machine Area Floors and Decks	√	√	√
Ladle Metallurgy Station Floors and Decks	√	√	√
Degasser Station Floors and Decks	√	√	√
Slab Mill Runout Table Floors	√	√	√



Revised 1/20

Visit alliedmineral.com for more information.